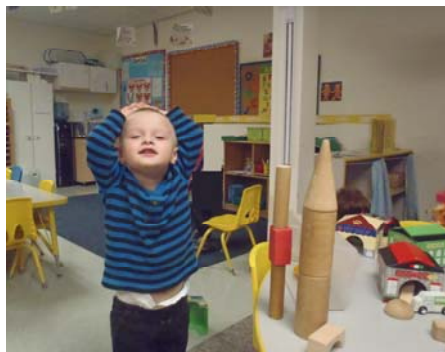


e center education environment employment



# Annual Report 2015



# Building Healthy Communities through Education, Employment and Environmental Awareness

## 2015 Board of Directors

**Sharron Zoller**

*Chairperson  
Lake County*

**Tad R. Brown**

*Fiscal Representative  
Lake County*

**Kimberly Steffenson**

*Legal Background  
Yuba County*

**Miguel Espinoza**

*Community Member  
Sutter County*

**Mayra Hegyes**

*HS Policy Council Representative  
Sutter County*

**Jennifer LaBadie**

*Secretary/Treasurer  
Butte County*

**Luz Sonato**

*MSHS Policy Council Representative  
Lake County*

**Jennifer Rich**

*ECE Background Member  
Butte County*

**Weldon (Wendy)**

**Jones**  
*Mendocino County*

## E Center Leadership Team

**Kulraj Samra**

*Chief Executive Officer*

**Jodie Keller**

*Early Childhood Education  
Programs Director*

**Ricky A. Samayoa**

*Program Evaluation and  
Monitoring Director*

**Greg Taylor**

*Facilities and Transportation  
Director*

**David Avalos**

*Information Services Manager*

**Troy Bettcher**

*Human Resources Director*

**Helaine Moore**

*WIC Program Director*

**Karen Franks**

*Fiscal Services Director*

**Amanda Rhyne**

*General Agency  
Administration Operations  
Manager*



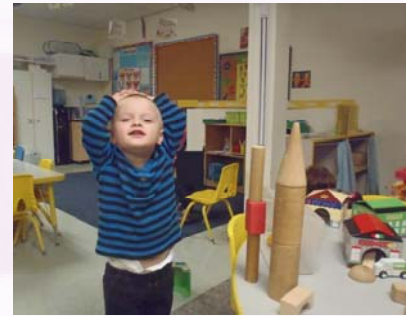
# E Center WIC



E Center has administered the Lake County WIC program since 1983. WIC is funded by the California Department of Health Services and the U.S. Department of Agriculture. The crucial building blocks for a community are healthy children and nothing is more important to a baby than a healthy mother. The Lake County Women, Infants, and Children (WIC) program addresses both these needs by providing critical nutrition information, referrals, and breast-feeding support in Lake County. The beneficiaries of the WIC program are low income pregnant women, nursing mothers, and young children at nutritional risk. E Center's WIC program has an excellent performance record, and statistics show that for each dollar spent on improving nutrition, three dollars in medical costs are saved.

# E Center Head Start Programs

For E Center, 2015 marked the third year of a 5-year **Head Start** Grant contract—to fulfill the Head Start mission, services are provided to **promote quality child development** in the areas of physical, emotional, dental, and nutritional health and in the development of cognitive and social skills that support our young learners for **school readiness**. In comparison to 2014, there have been increases in the number of children and families served, improvements in average monthly enrollment, and children receiving Medical Exams. Data also indicates that there has been a decrease, from 2014 to 2015, in the percentage of pre-school age children that received a Dental Exam. We believe the decline in the number of mobile dental vans within our service area directly affected the lower percentage of children receiving professional dental exams.



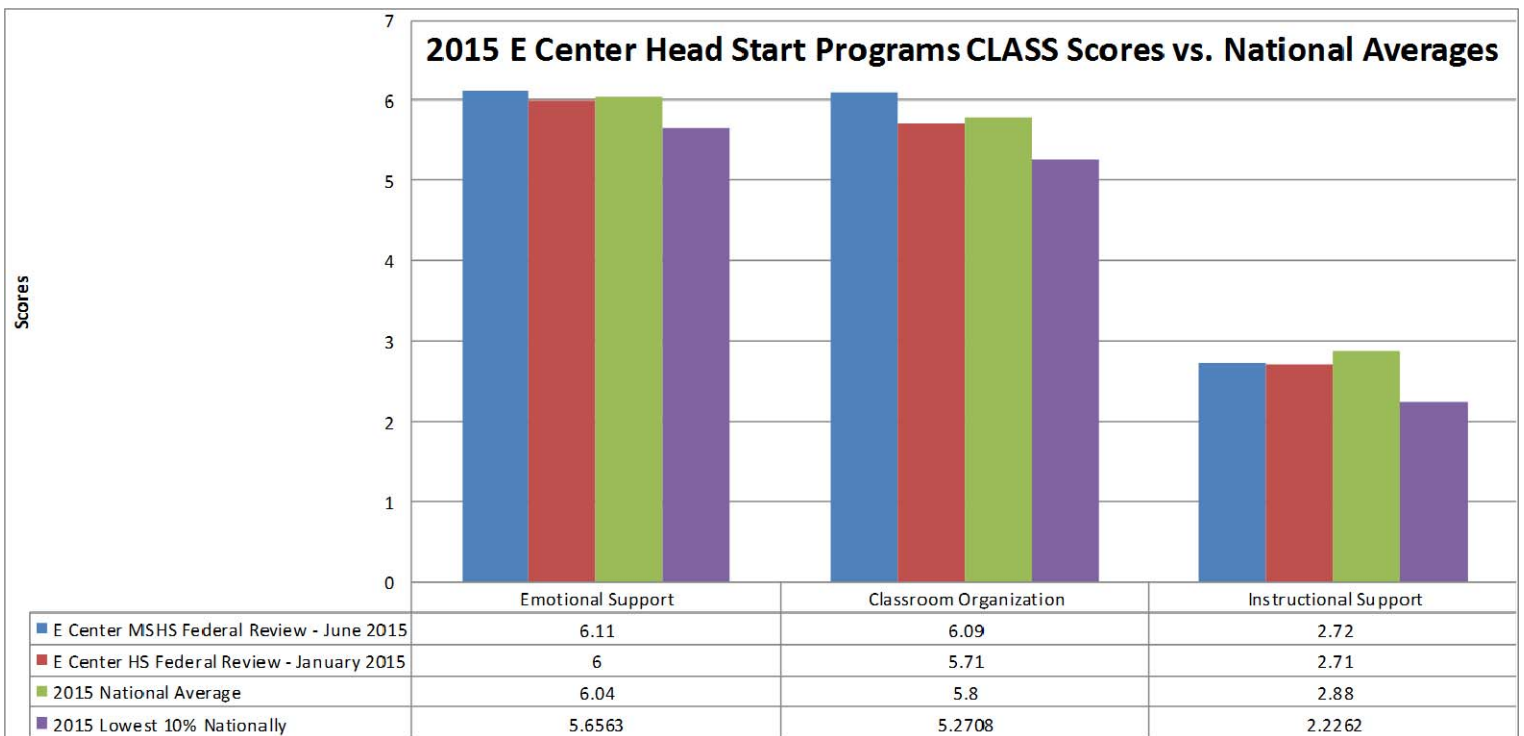
Indicator	PROGRAM				2015 Sum/Average	2014 Sum/Average
	HEAD START	EARLY HEAD START	MIGRANT AND SEASONAL HEAD START	MIGRANT EARLY HEAD START		
Total Number of Children Served	1063	474	539	35	2,111	1,978
Total Number of Families Served	999	406	438	32	1,875	1,775
Average Monthly Enrollment	98.6	99.1	65.85		87.86	79.6
Percentage of Eligible Children Served in Community—Based on 2012 Community Assessment	26	4.3	6.7		12.3	12.3
Percentage of Children that received Medical Exams (excluding children enrolled less than 45 days)	92	75	96.46	88.57	88	77.2
Percentage of Children that received Dental Exams (excluding children enrolled less than 45 days)	69	N/A	86	N/A	77.5	82.8

Head Start and Early Head Start Programs statistics are based on services between August 2014 to July 2015 and Migrant and Seasonal Head Start/Migrant Early Head Start Programs are based on services between May and November 2015

# School Readiness—Teacher/Child Interaction



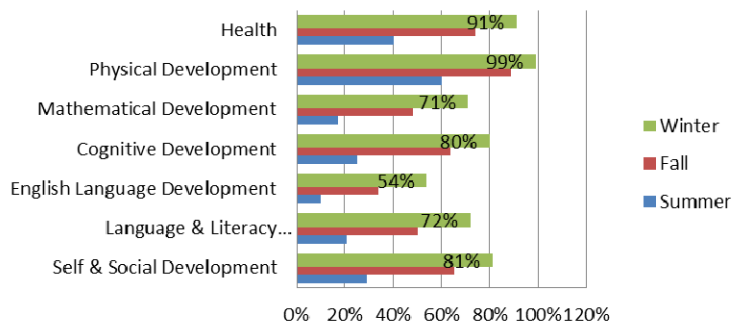
During the 2014-15 program year, the Office of Head Start (OHS) used Classroom Assessment Scoring System (CLASS) Pre-K Teacher-Child Observation Instrument during its on-site review of grantees. E Center was reviewed twice by OHS—once in January 2015 for our Head Start program and again on June 2015 for our Migrant and Seasonal Head Start program. As described by the graph below, E Center scores were within plus or minus 6% of the National Averages and significantly higher than the lowest 10% Nationally.



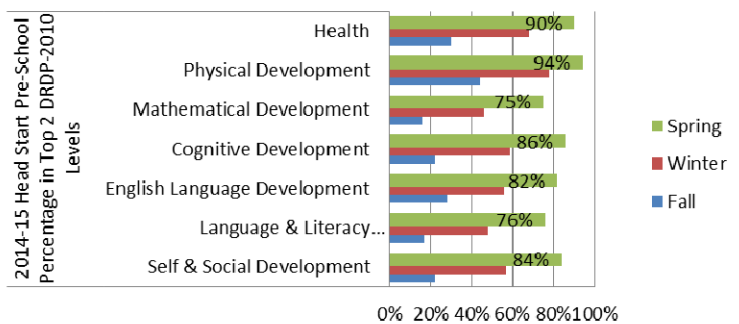


# School Readiness—Child Outcomes

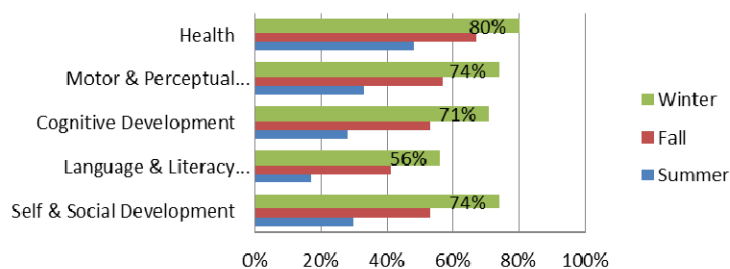
**2015 Migrant and Seasonal Pre-School-Age Percentage in Top 2 DRDP-2010 Levels**



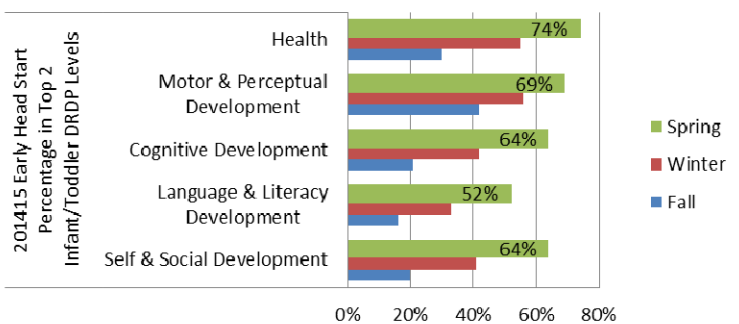
**2014-15 Head Start Pre-School Percentage in Top 2 Desired Results Levels**



**2015 Migrant and Seasonal and Migrant Early Head Start Percentage in Top 2 Infant/Toddler DRDP Levels**



**2014-15 Early Head Start Percentage in Top 2 Infant/Toddler DRDP Levels**



Using Desired Results Developmental Profile (DRDP), E Center to measure the development progress of participating children. The results are used to plan curriculum and daily activities for individual children and groups of children, classes, sites and programs. Additionally, E Center uses DRDP results to focus intentional teacher trainings and program expenditures. The results also measure E Center's School Readiness Goals.

# Family and Community Engagement Efforts

E Center engages parents in school readiness goals through both out of class activities that are connected to the curriculum and their individual child goals and through the family goal setting process. Each family makes a minimum of two family goals; the first goal is a needs based goal and is derived from the Family Strength Assessment. The second goal is a “family” school readiness goal and is based on one of the four foundations that supports school readiness. Families are assessed and goals are reviewed three times a year to determine need and identify growth. Growth for these goals is rated on a 5 point scale ranging from no steps taken (0) to goal integrated (5).



**Head Start Programs Outcomes for Foundations for Family Success**  
These averages include families with a pre and post score on the Individualized Family Plan. the average starting point for the goals was between a 1 and a 2 and ending score was between a 3 and a 4.

## **Infant Toddler Outcomes—EHS**

- Family Routines- There was an average increase of 1.7
- Language Rich Experiences- There was an average increase of 1.4
- Reading with Children- There was an average increase of 1.8
- Positive Discipline- There was an average increase of 1.5

## **Pre-School Outcomes— HS**

- Family Routines- There was an average increase of 1.8
- Language Rich Experiences- There was an average increase of 1.8
- Reading with Children- There was an average increase of 1.8
- Positive Discipline- There was an average increase of 1.7

## **Migrant and Seasonal Head Start**

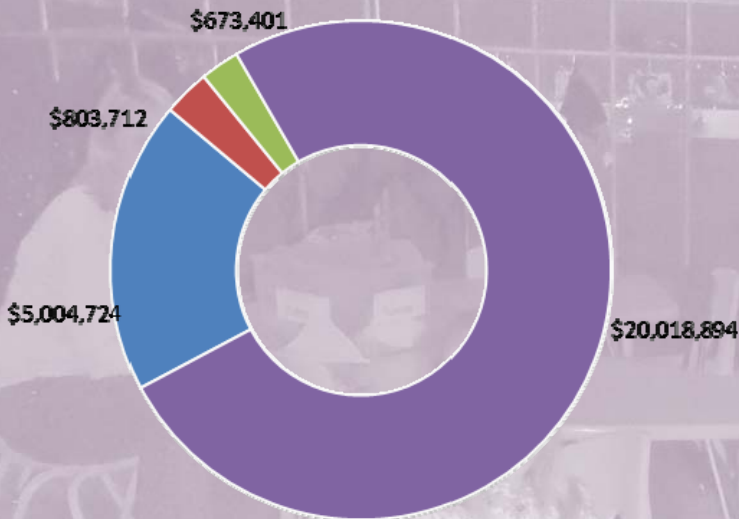
- Family Routines- There was an average increase of 1.9
- Language Rich Experiences- There was an average increase of 1.8
- Reading with Children- There was an average increase of 1.9
- Positive Discipline- There was an average increase of 1.6



# Operating Budget and Revenues by Type

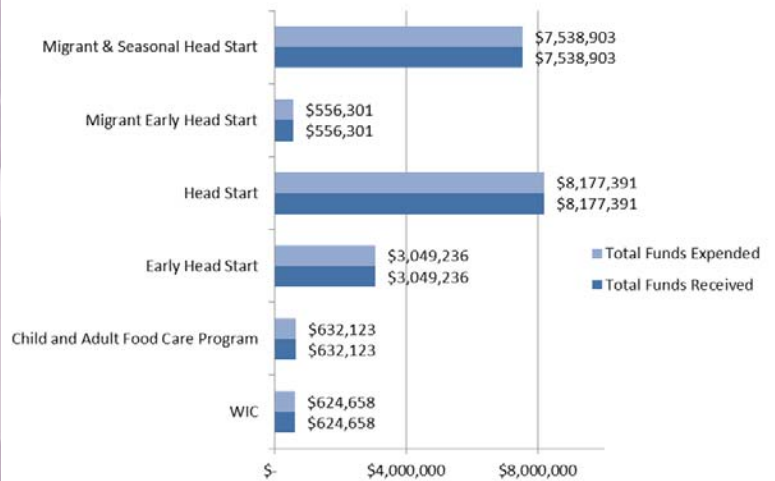
## 2015-16 Operating Budget

In accordance with Government Auditing WIPFLI Issued report dated November 30, 2015 on their consideration of E Center's internal control over financial reporting and its test of our compliance with appropriate laws, regulations, contracts and grant agreements and other matters.



- Donations, Fee-for-Service and Other Revenue
- California Department of Health Services (WIC)
- Child and Adult Food Care Program
- Head Start Programs

## E Center Funded Revenues by Type July 1, 2014 - June 30, 2015



## 2014-2015

Head Start Revenues	HS	EHS	MSHS	MEHS	Totals
Grant Income	\$ 8,177,391	\$ 3,049,236	\$ 7,538,903	\$ 556,301	\$ 19,321,831
Other Income	\$ 16,081	\$ 67,798	\$ 2,944	\$ 61	\$ 86,884
<b>Totals</b>	<b>\$ 8,193,472</b>	<b>\$ 3,117,034</b>	<b>\$ 7,541,847</b>	<b>\$ 556,362</b>	<b>\$ 19,408,715</b>

## Head Start Expenditure by Category

Personnel	\$ 3,913,409	\$ 1,610,084	\$ 3,677,645	\$ 301,303	\$ 9,502,441
Fringe Benefits	\$ 1,483,064	\$ 603,679	\$ 1,183,151	\$ 80,304	\$ 3,350,198
Travel	\$ 14,940	\$ 8,723	\$ 30,741	\$ 3,800	\$ 58,204
Equipment	\$ 188,662	\$ 12,664	\$ 73,256	\$ -	\$ 274,582
Supplies	\$ 265,901	\$ 97,427	\$ 306,363	\$ 23,529	\$ 693,220
Other Direct Costs	\$ 1,573,762	\$ 493,731	\$ 1,568,262	\$ 95,086	\$ 3,730,841
Indirect Costs	\$ 753,734	\$ 290,726	\$ 702,429	\$ 52,340	\$ 1,799,229
<b>Totals</b>	<b>\$ 8,193,472</b>	<b>\$ 3,117,034</b>	<b>\$ 7,541,847</b>	<b>\$ 556,362</b>	<b>\$ 19,408,715</b>

## Non-Federal Share

(Actual)*	\$ 2,074,377	\$ 740,905	\$ 1,156,859	\$ 49,313	\$ 4,021,453
-----------	--------------	------------	--------------	-----------	--------------

\*Total Grant NFS including non-GAAP categories



# E Center Butte County Courthouse Children's Waiting Room



E Center welcomes the addition of Butte County Courthouse Children's Waiting Room as a new grant to our agency. The Children's Waiting Room, located at the new North Butte County Courthouse in Chico, offers a safe,

progressive, and fun environment for children (ages 2-12) who have family members and legal guardians attending court proceedings. The Children's Waiting Room offers drop-off childcare services for no more than 4 hours per child per day to allow for parents and guardians to participate in courtroom activities. Admission priority is given to families on the 300 (juvenile dependence) calendar. All other children will be admitted on a first-come, first-served basis.



1506 Starr Drive  
Yuba City, CA 95993  
tel 530.634.1200  
fax 530.743.3002  
[www.ecenter.org](http://www.ecenter.org)