



2017 E Center Annual Report

Building Healthy Communities through Education, Employment and Environmental Awareness



About E Center

E Center, a private non-profit organization incorporated in 1973, has an annual budget of over \$20 million and employs 500+ employees throughout Northern California.

<http://www.ecenter.org/>

2017 Board of Directors

Sharron Zoller Chairperson Lake County	Jennifer LaBadie Secretary/Treasurer Butte County
Gino Patrizio Legal Background Yuba County	Luz Sonato MSHS Policy Council Representative Lake County
Sharice Atkins HS Policy Council Representative	Weldon (Wendy) Jones Mendocino County
Stacie Gandy Early Childhood Education Background	Adeleno Fierro MSHS PC Representative Glenn County

E Center Leadership Team

Kulraj Samra Chief Executive Officer	Jodie Keller Early Childhood Education Programs Director
David Avalos Information Services Manager	Helaine Moore WIC Program Director
Ricky A. Samayoa Program Evaluation and Monitoring Director	Karen Franks Fiscal Services Director
Greg Taylor Facilities and Transportation Director	Amanda Rhyne General Agency Administration Operations Manager
Al Bonnenfant Human Resources Director	

TABLE OF CONTENTS

About E Center	2
E Center WIC	3
Operating Budget and Revenues by Type	4
Community Assessment Summary	5
E Center Head Start Programs	6
School Readiness – Teacher/child Interaction	7
School Readiness—Head Start and Early Head Start Programs	8
School Readiness—Migrant and Seasonal Head Start Programs	9
Family Engagement—Head Start and Early Head Start Programs	10
Family Engagement—Migrant and Seasonal Head Start Programs	11

E Center WIC



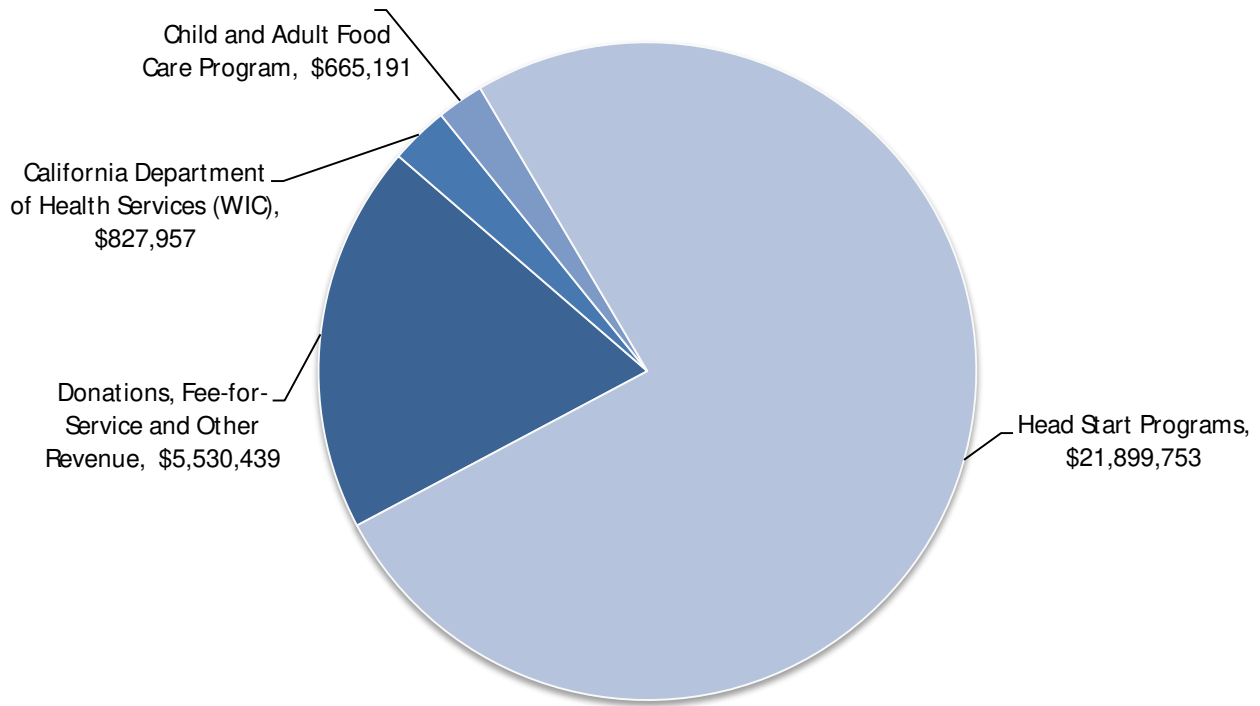
Women, Infants and Child Programs

The E Center WIC Program fills a vital food stability need in Lake County. Over the past year we have averaged over 90% of our required caseload of 2,700 participants per month. WIC also has a Farmer's Market program where eligible families can receive \$20 toward buying fresh fruits and vegetables at our Certified Farmer's Markets. We have had a Farmer's Market voucher redemption rate over 90% for the last 6 years.

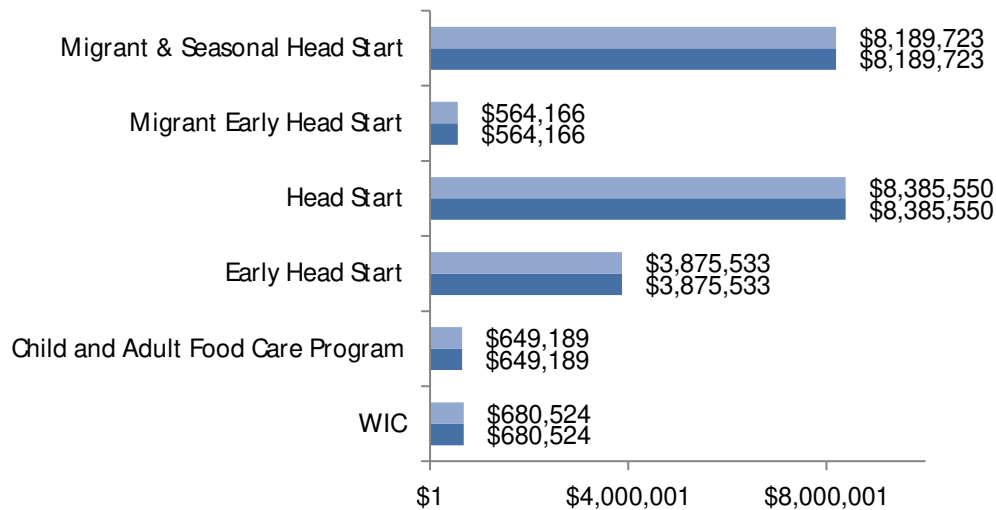
WIC is more than food vouchers – It is a nutrition education, health promotion and referral program. Over the last year we have taught participants My Plate suggestions, tips on fruit and vegetable preparation, Cooking with Kids, as well as all the category specific nutrition education materials throughout pregnancy, breastfeeding, infancy and young childhood. We have several MOUs, Memorandum of Understanding – referral and collaboration agreements with North Coast Opportunities Head Start Program, Lake Family Resource Center, Easter Seals, Healthy Start, and First 5 Mother-Wise Program among others.

Operating Budget and Revenues by Type

E Center 2017-18 Operating Budget by Type



E Center Funded Revenues by Type July 1, 2016 - June 30, 2017



Recent Review by Auditor: In accordance with Government Auditing, WIPFLI, an independent auditor, issued a report dated October 31, 2017, on their consideration of E Center's internal control over financial reporting and its test of our compliance with appropriate laws, regulations, contracts and grant agreements and other matters. It is the

opinion of WIPFLI, that E Center complied, in all material respects, with the compliance requirements described in the U.S. Office of Management and Budget Compliance Supplement that could have direct and material effect on its major federal program for the year ended June 30, 2017.

Head Start Programs Community Assessment Summary



E Center Head Start Programs' Service Area is made up of 19 northern California counties. The entire Service Area with and without E Center Head Start services is over 41,000 square miles with an approximate population of 3.8 million. Yuba, Sutter, and Butte Counties (purple area) are counties where E Center provides Head Start programs: Migrant and Seasonal Head Start (MSHS), Migrant Early Head Start (MEHS), Head Start (HS) and Early Head Start (EHS). The gray service area is where only MSHS services are provided. We currently have 11 MSHS/MEHS and 20 HS/EHS centers throughout our service area. Plus, Family Child Care Homes in Colusa, Sutter and Yuba counties. Yuba, Sutter, and Butte Counties (purple area) are counties where E Center provides Head Start programs: MSHS, MEHS, HS and EHS. The gray service area is where only MSHS and MEHS services are provided.

E Center's Head Start and Early Head Start service area is a combination of urban, suburban and rural unincorporated areas in three northern California counties along the Sacramento Valley. Urban areas include cities Chico, Gridley and Paradise and Oroville in Butte County; Live Oak and Yuba City in Sutter County; and Marysville and Wheatland in Yuba County.

Education, health, nutrition, social service, child care, parent schedules, and other service needs of children, families, and pregnant women in Service Area.

Below we provide a set of Community Health Indicators by county where E Center provides some type of Head Start Service. The data was extracted from two sources: 1) The California Department of Public Health: County Health Status Profiles 2017; 2) 2017 County Health Ranking California Data

Low Birth Weight: "Low birth weight has been associated with negative birth outcomes, and may be an indicator of access problems and/or the need for prenatal care services (California Department of Public Health: County Health Status Profiles 2009)". There is an agreement amongst the two data sets that Glenn (7.1) is the only county higher than the State average of 6.8; while Yolo (5.7) and Sonoma (5.6) are the only counties lower than the statewide average.

Birth to Adolescent Mothers/ Teen Birth Rates: Among the counties where E center provides some type of Head Start program, the [California Department of Public Health and 2017 County Health Ranking agree that all counties except for Butte \(18.5\)](#), Sonoma (12.5), and Yolo (11.3) have a higher rate of births to adolescent mothers ages 15 to 19 than the Statewide of 21.0. The highest among all nine counties is Lake with 33.4.

Prenatal Care: As for counties where E center provides some type of Head Start service, Lake (65.0) and Tehama (75.7) counties have the lowest level of women receiving Adequate Prenatal Care as compared to the State (78.3). The only county above statewide average is Yolo with 81.8.

Breastfeeding: Breastfeeding data is only based on breastfeeding initiation after postpartum. There is no reliable data with information about whether or not mothers continued the practice after leaving hospital. Counties in the Service area with lower levels than the State's three-year average (93.5) are Yuba (89.9), Sutter (90.9), Colusa (92.2), Lake (92.4), and Butte (92.7). The county significantly higher than the statewide average is Yolo with 96.5.

Income Inequality: This indicator can impact the health of communities because income inequalities accentuate difference in social class, status, and access to services. For example, the greater the inequality within the community of the county the greater the effect of segmenting by categorizing the population into categories of great health standing compare to very poor health standing. As for counties where E center provides some type of Head Start service, Yolo (5.8), Glenn (5.6), and Butte (5.3) are well above the statewide average of 5.2. All other counties are below statewide average.

Children in poverty: According to the California Department of Health, there has been an increase in the percent of children under 18 years of age living in poverty. The counties in the service area that are higher than the statewide average of 21 are Yuba (32), Tehama (32), Lake (30), Glenn (26), Sutter (24), Butte (24). Yolo County with 17 is below the statewide average indicating that there is less children living in poverty in that specific county.

Birth Intervals: Birth Interval rate is the percent from the number of women ages 15-44 with birth intervals less than 24 months divided by the total number of women ages 15-44 with a live birth. Only three counties, Butte (24), Sonoma (19), and Yolo (16) are below statewide average of 29 among those counties where E center provides some type of Head Start services. The highest rate among those counties is 42 for both Yuba and Lake Counties.

Violent Crime Rate: The counties higher than the statewide average (407) are Lake (539), Tehama (538) and Glenn (419). Compare to the counties lower than the statewide average, which are: Yuba (387), Sonoma (363), Yolo (317), Sutter (306), Butte (299), and Colusa (200) for the year 2017.

Access to Healthy Foods (Food Environment Index): This health indicator indicates the relationship between the availability of healthy food options with the correlation of that of convenience stores providing less healthy food options leading to adverse health outcomes, such as; obesity and premature death. Traditionally supermarkets offer healthier food options. Also, low income status can be of barrier to access healthy food options. Yuba County (5.0) is below statewide average of 7.8 making this county one of the least healthy county with available healthy food options. Yet, Sonoma County is the only county above statewide average with 8.0 indicating this county is abundant in healthy food options to its communities.

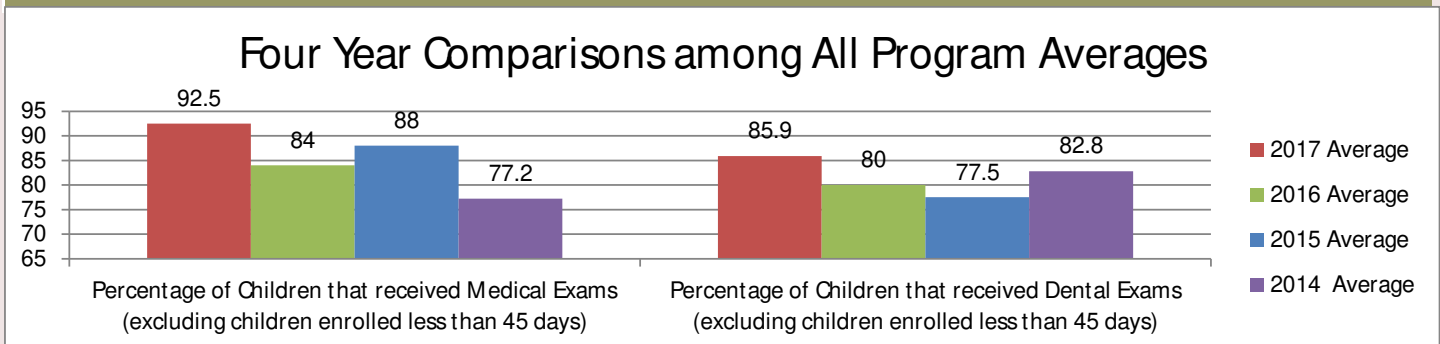
E Center Head Start Programs

For E Center, 2017 marked the 5th year of a 5-year Head Start Grant contract—to fulfill the Head Start mission, services are provided to promote quality child development in the areas of physical, emotional, dental, and nutritional health and in the development of cognitive and social skills that support our young learners for school readiness.



Indicator	PROGRAM			
	HEAD START	EARLY HEAD START	MIGRANT AND SEASONAL HEAD START	MIGRANT EARLY HEAD START
Total Number of Children Served	940	491	595	
Total Number of Families Served	884	429	439	
Average Monthly Enrollment	95%	99%	47%	
Percentage of Eligible Children Served in Community—Based on 2012 Community Assessment	26	4.3	6.7	
Percentage of Children that received Medical Exams (excluding children enrolled less than 45 days)	95.7	93.2	88.6	
Percentage of Children that received Dental Exams (excluding children enrolled less than 45 days)	81.5	n/a	90.3	

Head Start and Early Head Start Programs statistics are based on services between August 2016 and July 2017 and Migrant and Seasonal Head Start/Migrant Early Head Start Programs are based on services between May and November 2017.

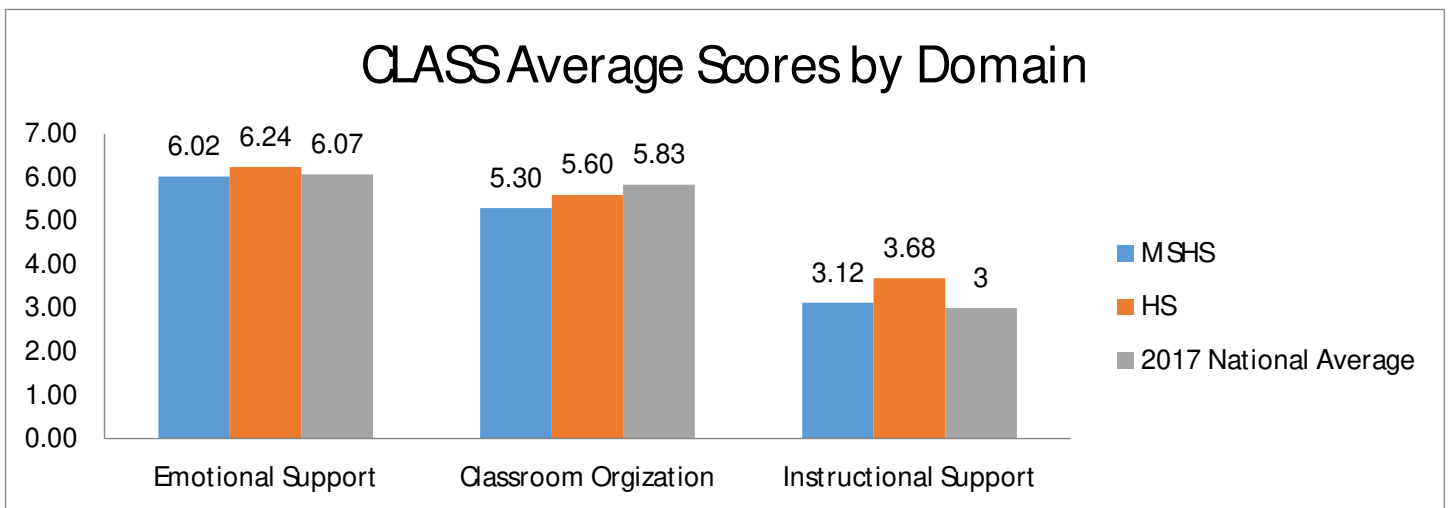


School Readiness—Teacher/Child Interaction



During the 2017 Program Term, teacher/ child interaction is measured internally twice using Classroom Assessment Scoring System (CLASS) Pre-K Teacher-Child Observation Instrument. Each classroom is assessed by CLASS certified staff. Below is the average scores of the second observation. by Domain, of all 50 pre-school classrooms that were observed during the 2017 season. The Averages Scores include the observation from

both E Center’s Head Start and Migrant Seasonal Head Start Programs. We have also included the 2017 national domain averages with their standard deviations. As described by the chart and table below, E Center’s averages are within two Standard Deviations of the National Averages.



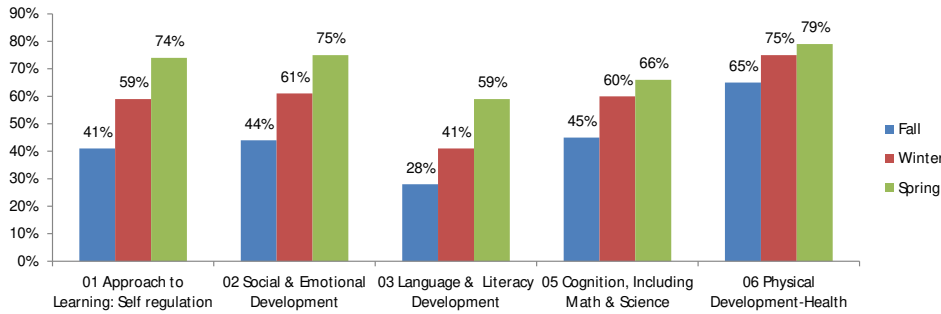
**OHS CLASS[®] Descriptive Statistics, 2017
National Grantee-Level Scores by Domain**

Domain	Mean	Standard Deviation	Minimum	Maximum
Emotional Support	6.07	0.30	5.08	6.89
Classroom Organization	5.83	0.40	4.17	6.73
Instructional Support	3.00	0.53	1.93	4.96

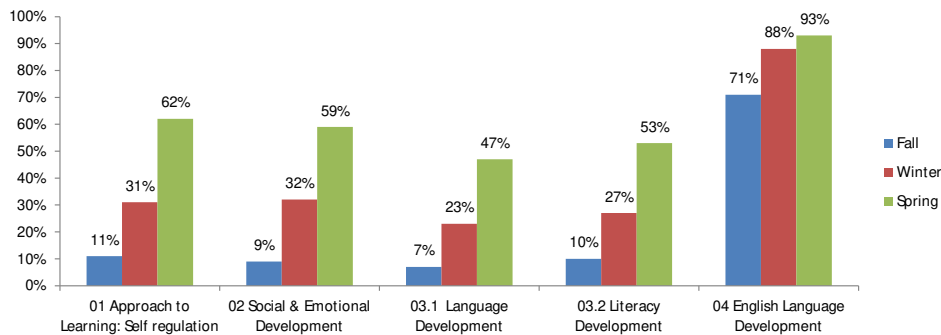
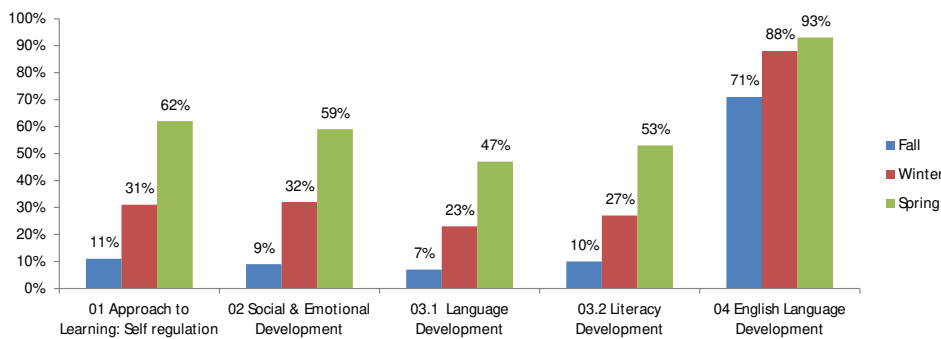
2016-17 School Readiness—Head Start and Early Head Start Programs



Domain Comparison for All Infant & Toddlers



Domain Comparison for All Pre Schoolers



The following charts, represent the percentages of participants at Age Specific Development Level for each of the three Desired Results Development Profile (DRDP) assessments completed during the 2017 program year.

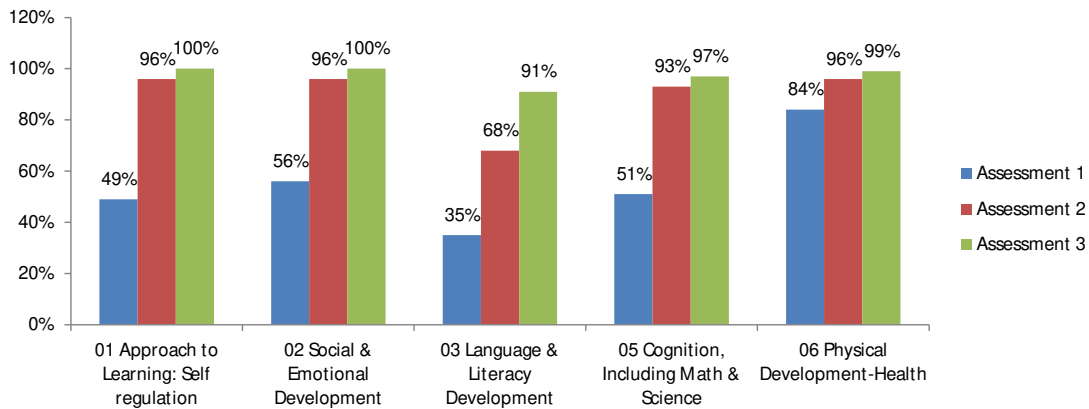
E Center uses DRDP (2015) in combination with other data sources, such as Environmental Ratings and CLASS to identify areas of strengths by agency, program, region, center and classroom. The combination of data analysis also provides direction on how we support teachers, center directors in their efforts toward continuous improvement of early childhood educational services in Northern California. (Continue on Page 9)



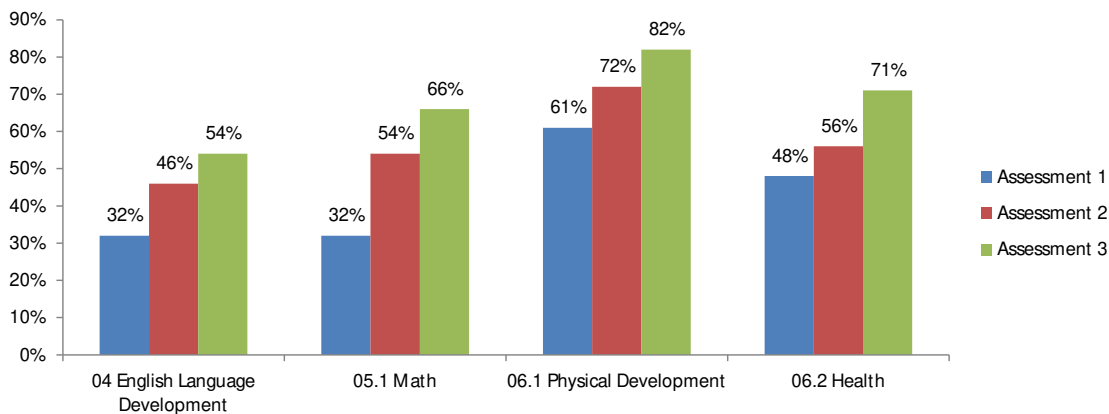
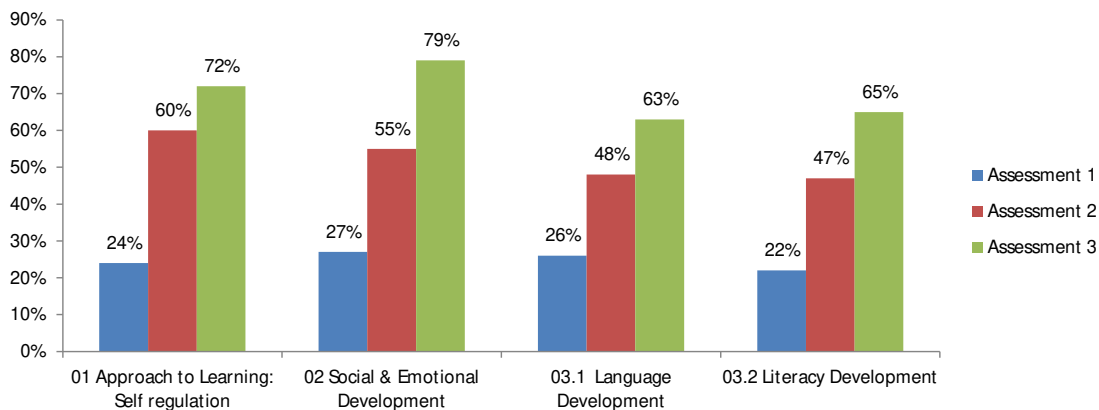
2017 School Readiness — Migrant and Seasonal Head Start Programs



Domain Comparison for All Infant & Toddlers



Domain Comparison for All Pre Schoolers

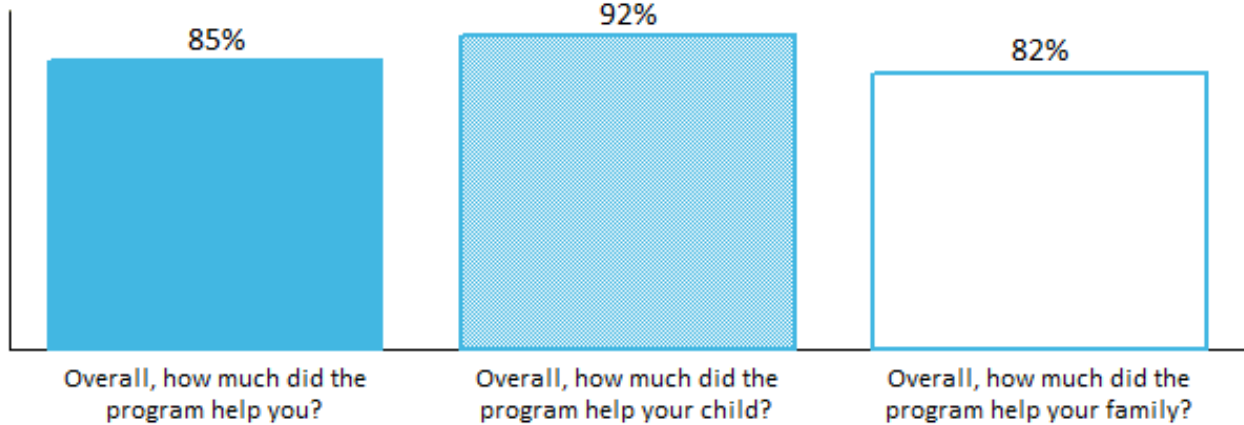


Continue from page 8: The DRDP (2015) results are used to plan curriculum and daily activities for individual children and groups of children. Additionally, E Center uses DRDP results to focus intentional teacher trainings and program expenditures. The results also measure E Center’s School Readiness Goals.

Family Engagement—Head Start and Early Head Start Programs



Percentage of Responses "Very Helpful"

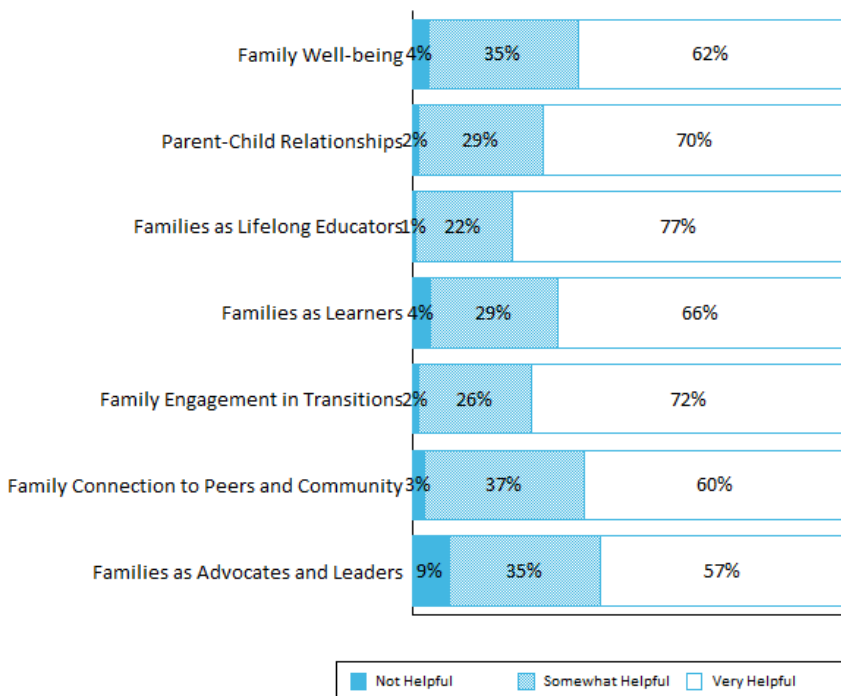


Overview

In the Spring of the 2016-2017 school year, 596 parents and guardians of children enrolled in E Center Head Start completed a survey about how they and their families benefited from the variety of services they received. Overwhelmingly, parents and guardians found E Center Head Start services very helpful. 92% reported that they found the program very helpful to their children, 85% reported that they found the program very helpful to themselves personally, and 82% reported that they found the program very helpful to their families. These results are a strong testament from the respondents about how much the E Center Head Start contributes to their families' well-being

How much did the program help you and your family?

Percentage of Responses



Outcome Areas

Family outcomes were measured in seven different "outcome areas" defined by the federal Office of Head Start in the "The Head Start Parent, Family and Community Engagement Framework".

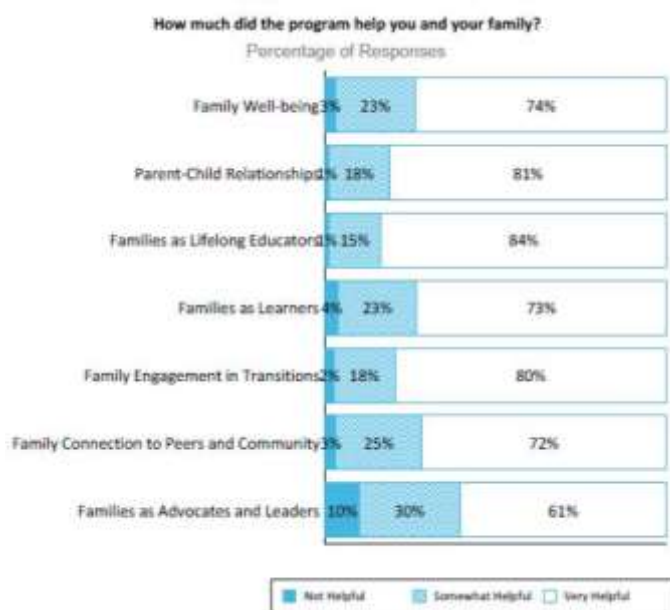
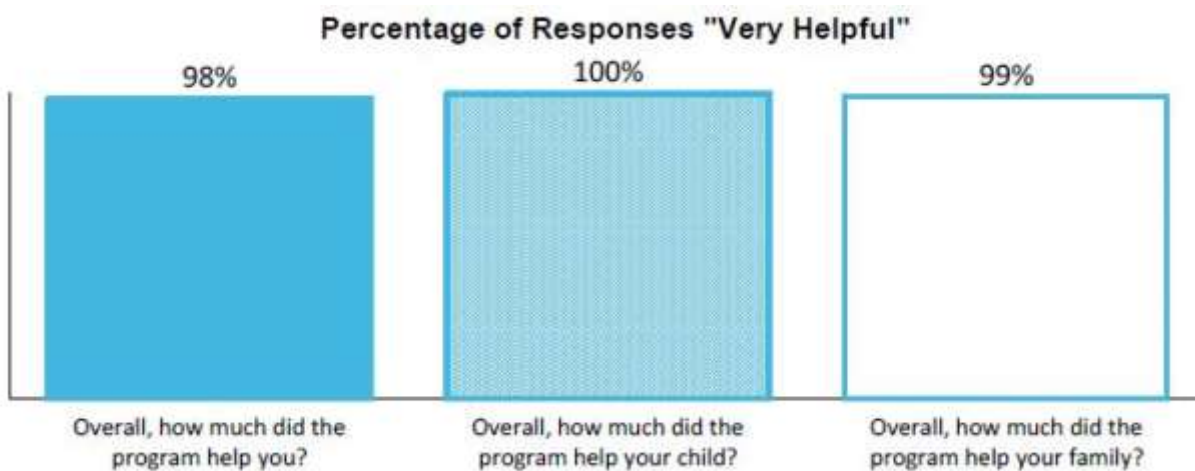
Of the seven areas, parents and guardians found E Center Head Start most helpful in "Families as Lifelong Educators" and "Family Engagement in Transitions". For "Families as Lifelong Educators", 77% of respondents found the program very helpful and 1% deemed the program not helpful. In the area of "Family Engagement in Transitions", 72% of respondents found the program very helpful and 2% found the program not helpful.

Family Engagement — Migrant and Seasonal Head Start Programs



Overview

In the Fall 2017, 289 parents and guardians of children enrolled in E Center Head Start MSHS completed a survey about how they and their families benefited from the variety of services they received. Overwhelmingly, parents and guardians found E Center Head Start MSHS services very helpful. 100% reported that they found the program very helpful to their children, 98% reported that they found the program very helpful to themselves personally, and 99% reported that they found the program very helpful to their families. These results are a strong testament from the respondents about how much the E Center Head Start MSHS contributes to their families' well-being.



Outcome Areas

Of the seven areas, parents and guardians found E Center Migrant and Seasonal Head Start most helpful in “Families as Lifelong Educators” (84% found it very helpful) and “Parent-Child Relationships” (81% found it very helpful).

1506 Starr Drive
Yuba City, CA 95993
tel 530.634.1200
fax 530.743.3002
www.ecenter.org