



# 2018 E Center Annual Report

Building Healthy Communities through Education, Employment and Environmental Awareness



# About E Center

E Center, a private non-profit organization incorporated in 1973, has an annual budget of over \$20 million and employs 500+ employees throughout Northern California.

<http://www.ecenter.org/>

## 2018 Board of Directors

### Sharron Zoller

*Chairperson*

Lake County

### Rosa Romero

*MSHS Policy Council Representative*

Sutter County

### Deeawn Scruby

*HS Policy Council Representative*

Sutter County

### Jennifer LaBadie

*Vice-Chairperson*

Butte County

### Stacie Gandy

*Secretary/Treasurer*

*Early Childhood Education Background*

Yuba County

### Weldon (Wendy) Jones

Mendocino County

### Kay Sidhu

Sutter County

## E Center Leadership Team

### Kulraj Samra

*Chief Executive Officer*

### David Avalos

*Information Services Manager*

### Ricky A. Samayoa

*Business and Grants Development Director*

### Al Bonnenfant

*Human Resources Director*

### Jodie Keller

*Early Childhood Education Programs Director*

### Helaine Moore

*WIC Program Director*

### Karen Franks

*Fiscal Services Director*

### Amanda Meyer

*General Agency Administration Operations Manager*

## TABLE OF CONTENTS

About E Center	2
E Center WIC	3
Operating Budget and Revenues by Type	4
E Center Head Start Programs Message	5
Community Assessment Summary	6
Head Start Programs Outcomes	7
School Readiness—Head Start and Early Head Start Programs	9
School Readiness—Migrant and Seasonal Head Start Programs	11
Family Engagement—Head Start and Early Head Start Programs	13
Family Engagement—Migrant and Seasonal Head Start Programs	14

# E Center WIC



## Women, Infants and Child Programs

The E Center WIC Program fills a vital food stability and breastfeeding support need in Lake County. WIC however is more than a program for food vouchers; it is a nutrition education, health promotion, and referral program. We work with many other Lake County agencies to promote our own organization as well as others who provide essential resources for families in need. We also provide breastfeeding support, lactation counseling, breast pumps and supplies to mothers in need which is imperative in our rural county.

We have several MOUs (Memorandum of Understanding), referral, and collaboration agreements with North Coast Opportunities Head Start Program, Lake Family Resource Center, Easter Seals, Healthy Start, and First 5 Mother-Wise Program among others. WIC also has a Farmer's Market program where eligible families can receive \$20 toward buying fresh fruits and vegetables at our Certified Farmers' Markets.

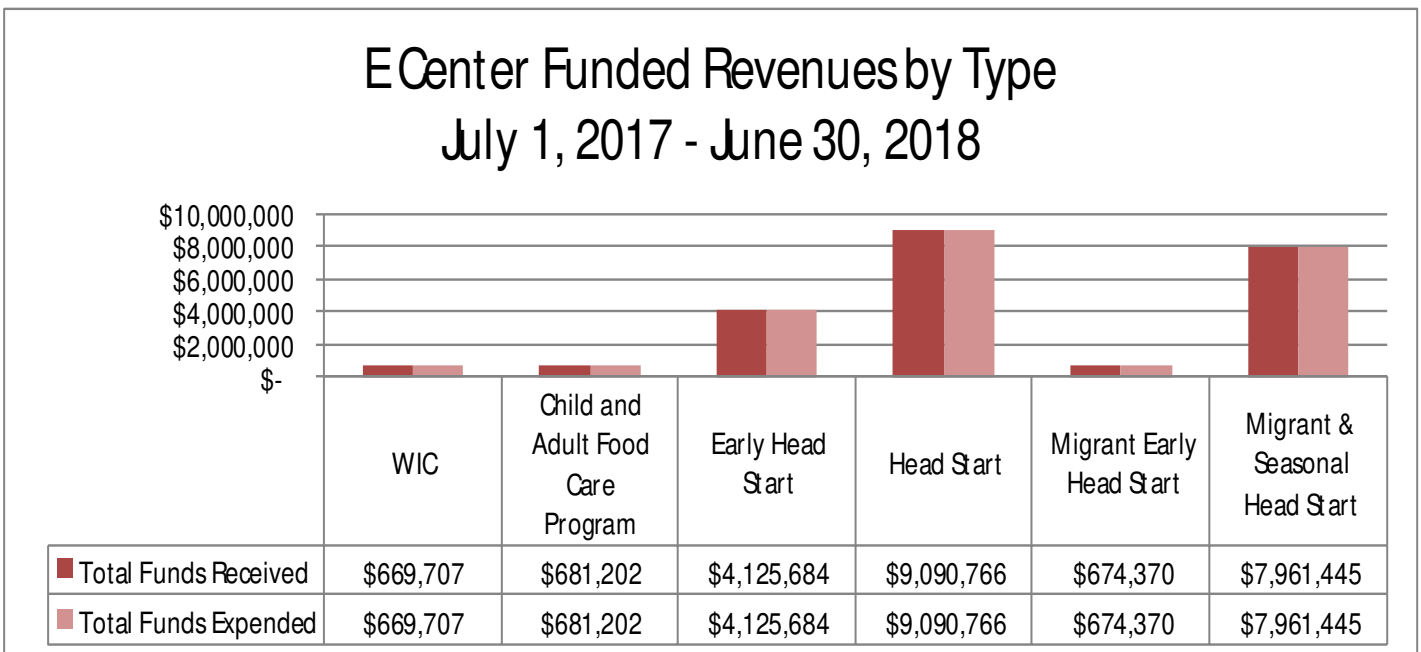
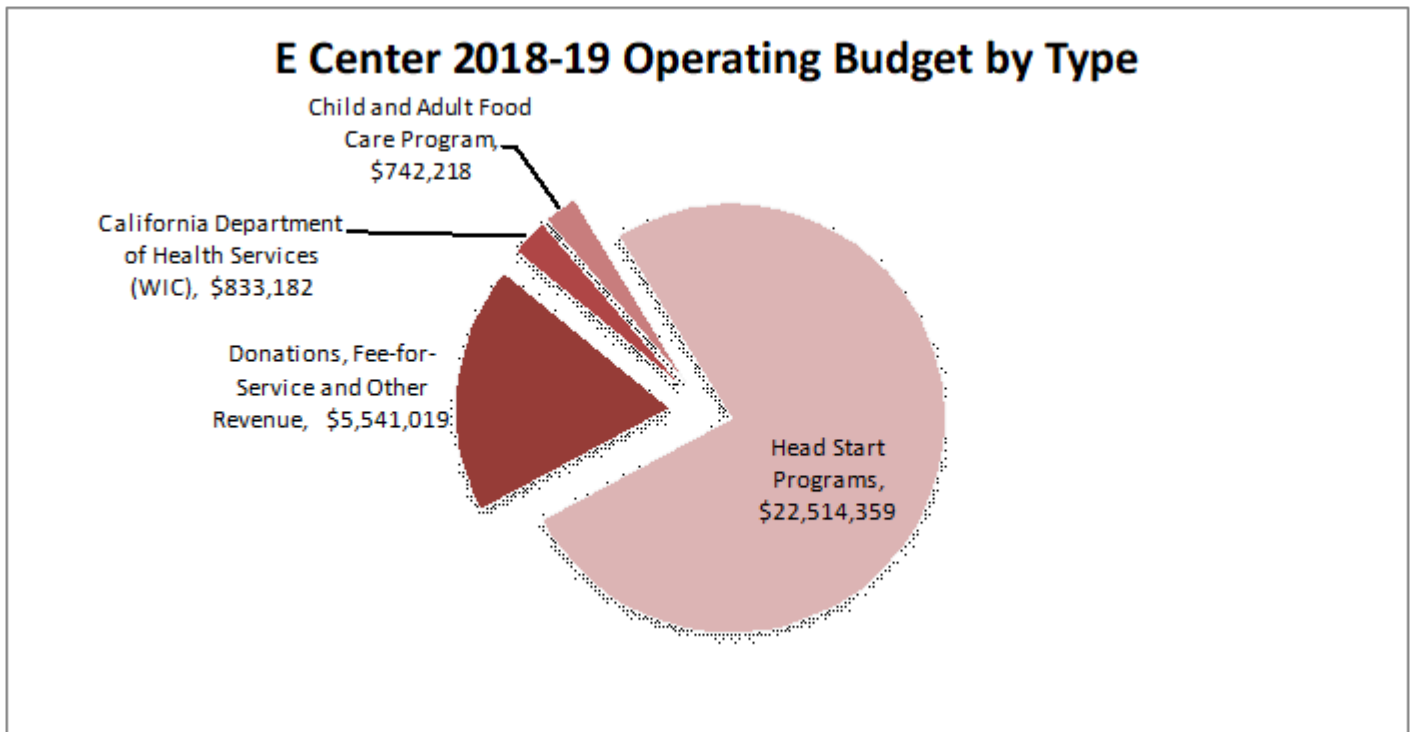
We have had a Farmer's Market voucher redemption rate of over 90% for the last 8 years, one of the highest of WIC programs in the state of California.

This year, 2019, we are also gearing up for our transition from paper checks and the WIC MIS system to the WIC card and the new WIC WISE data entry system. We will begin training staff, vendors, and participants on using the new WIC card, providing a more streamlined, convenient, and confidential way to purchase WIC foods at local stores.

“We have had a Farmer's Market voucher redemption rate of over 90% for the last 8 years, one of the highest of WIC programs in the state of California. “

# Operating Budget and Revenues by Type

**Recent Review by Auditor:** In accordance with Government Auditing, WIPFLI, an independent auditor, issued a report dated October 31, 2018, on their consideration of E Center’s internal control over financial reporting and its test of our compliance with appropriate laws, regulations, contracts and grant agreements and other matters. It is the opinion of WIPFLI, that E Center complied, in all material respects, with the compliance requirements described in the U.S. Office of Management and Budget Compliance Supplement that could have direct and material effect on its major federal program for the year ended June 30, 2018.





# E Center Head Start Programs



Welcome...

E Center receives funding from the Office of Head Start to operate four (4) Head Start grants including: Migrant Seasonal Head Start, Migrant Early Head Start, Head Start, and Early Head Start. Services are provided for children ages 0-5 including pregnant woman in the Early Head Start program. Our operation season varies based on community need and funding availability.



Our services are provided primarily in center base settings but we do provide services both in the home as well as in Family Childcare settings depending on funding availability. For many of our locations, we provide bus transportation to support access to services. You'll read throughout this report about statistics related to services provided such as school readiness, family engagement, children's health, and adult and child interactions. E Center works in conjunction with the local school districts to support kindergarten transition activities.



E Center prides itself on our learning environments both indoors, outdoors and even on our busses. We firmly believe that children learn through play and through rich learning environments. We have recently implemented a new curriculum "Frog Street" that provides opportunity for engaged, fun, inquisitive learning for the children, stretching their imaginations and expanding their math, science, language skills and social and emotion growth. The frogs are simply fun for the children and an invaluable means of teaching children new concepts.



I welcome readers of the report to really look at the information provided to better understand the quality teaching that is happening in all of our classrooms across all counties. If interested, request a tour of a site or classroom. We also have plenty of opportunity for community volunteer activities as well. Children are supervised at all times by qualified teaching staff throughout their time in our classrooms. Check us out on Facebook, "like" us to receive updates about activities we are involved in and the celebrations of the good things that happen in a Head Start classroom.

Sincerely,

Jodie K dler  
Program Director

# Head Start Programs Community Assessment

## Summary Update

E Center's Head Start and Early Head Start service area is a combination of urban, suburban and rural unincorporated areas in three northern California counties along the Sacramento Valley. Urban areas include cities Chico, Gridley and Paradise and Oroville in Butte County; Live Oak and Yuba City in Sutter County; and Marysville and Wheatland in Yuba County.

**The 2018 Camp Fire** devastated the city of Paradise, CA in Butte County, displacing over 26,000 individuals. Given that the event occurred after our planning process, we were not able to make adjustments to our program. As an Agency, E Center was able to support some of the displaced families by opening a Temporary Licensed Child Care center in

Gridley. We will work diligently with our community partners in finding long-term support to those families with children under five that that end up staying in one of our communities, such as Chico, Oroville and Gridley. We know there is tremendous need for pre-school and infant/toddler for those that end up staying in area, including new facilities and aggressive mental health support.

**ESTIMATED NUMBER of MIGRANT AND SEASONAL HEAD START ELIGIBLE CHILDREN:** The method used to estimate the number of Migrant and Seasonal Head Start Eligible families and children is based on the "Migrant and Seasonal Head Start Supplement to the National Agricultural Workers Survey 2015 Report, California Average Number of MSHS- Eligible Children per Household ": The average number of MSHS, Eligible Children per household is calculated by multiplying the statewide average rate of .20 to Migrant Hired Labor estimates by 2012 USDA Ag county. The variable farmworker population (Hired Farm Labor) is inclusive of farm workers whom work over and less than 150 days without taking into account the whole farm labor market because farmers do not report on workers employed by farm labor contractors. Based on 2015 National Agricultural Workers Survey [NAWS], Migrant and Seasonal Head Start [MSHS] eligible children have to meet the following criteria:

- Children under the age of six
- Income below 100 percent of the federal poverty level for their household size
- More than 50% of income derived from eligible agricultural work

Among counties where E Center provides some type of Head Start Services, the two main counties with the highest number of migrant children are Tehama (757), and Yolo (411), followed by: Glenn (221), Lake (218), Sutter (198) and Colusa (159). While, the two counties without any E Center services being provided are Napa (535) and Sonoma (583).



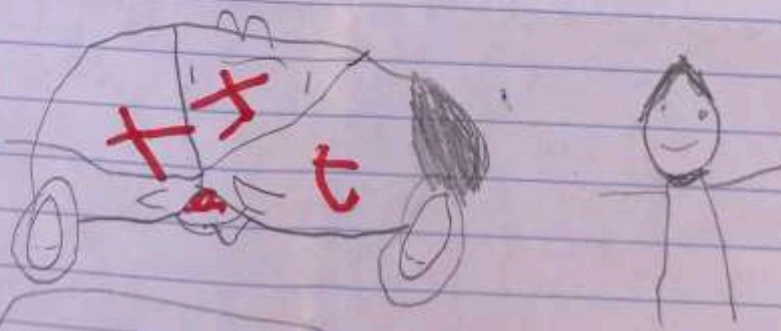
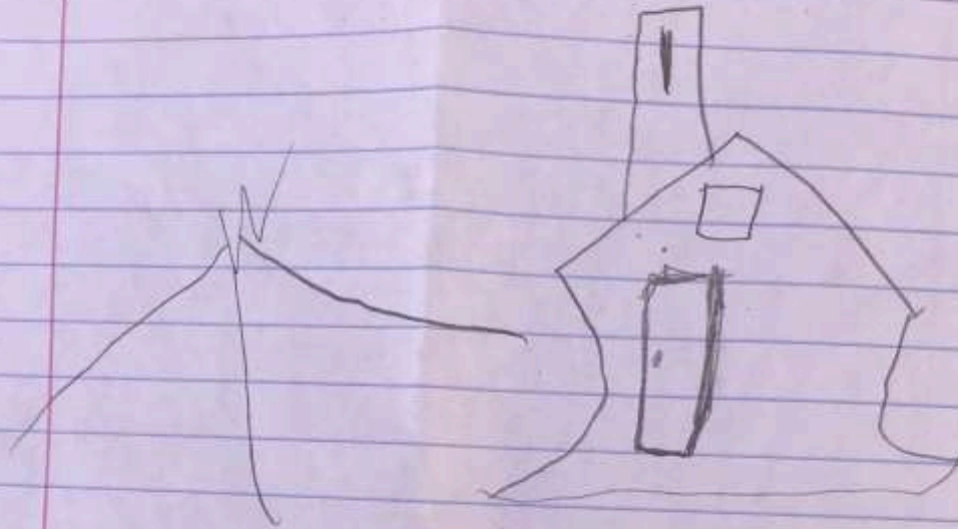
# E Center Head Start Programs

For E Center, 2018 marked the 1st year of a 5-year **Head Start** Grant contract—to fulfill the Head Start mission, services are provided to **promote quality child development** in the areas of physical, emotional, dental, and nutritional health and in the development of cognitive and social skills that support our young learners for **school readiness**.



Indicator	PROGRAM			
	HEAD START	EARLY HEAD START	MIGRANT AND SEASONAL HEAD START	MIGRANT EARLY HEAD START
Total Number of Children Served	909	491	595	
Total Number of Families Served	858	429	439	
Average Monthly Enrollment	91%	88%	46%	
Percentage of Eligible Children Served in Community—Based on 2018 Community Assessment Update	14	4.5	6.1	
Percentage of Children that received Medical Exams (excluding children enrolled less than 45 days)	94%	85%	90%	
Percentage of Children that received Dental Exams (excluding children enrolled less than 45 days)	82%	n/a	92%	

Head Start and Early Head Start Programs statistics are based on services between August 2017 and July 2018 and Migrant and Seasonal Head Start/Migrant Early Head Start Programs are based on services between May 2018 and April 2019.



HELMO

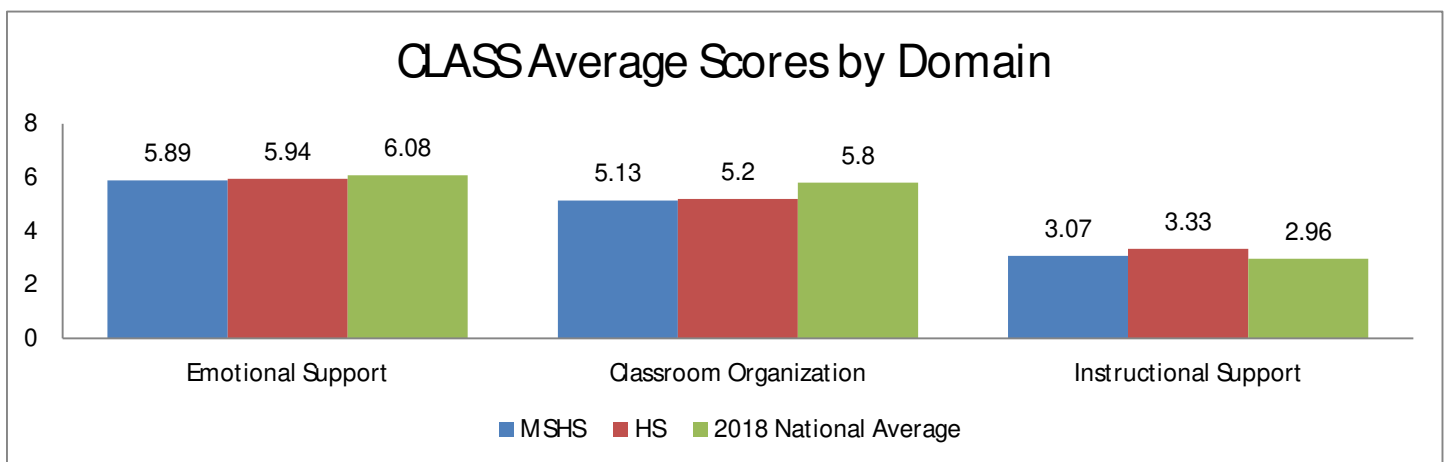


# School Readiness—Teacher/Child Interaction



During the 2018 Program Term, teacher/child interaction is measured internally twice using Classroom Assessment Scoring System (CLASS) Pre-K Teacher-Child Observation Instrument. Each classroom is assessed by CLASS certified staff at the beginning of program. Below is the average scores of the second observation, by

Domain, of selected school classrooms that were observed during the 2018 season. The second set of observations, represent scores of those with the lowest 10% in the first series of observations after mentor coaching. The Averages Scores include the observation from both E Center’s Head Stat and Migrant Seasonal Head Start Programs. We have also included the 2018 national domain averages for comparison.





The Three Little Pigs



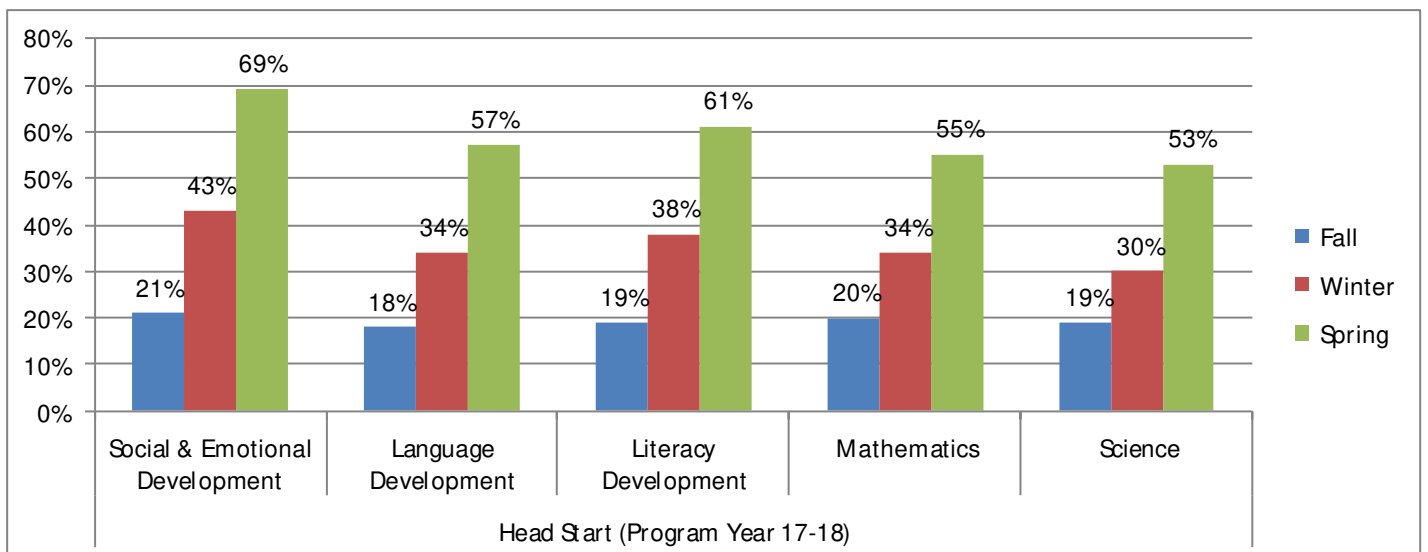
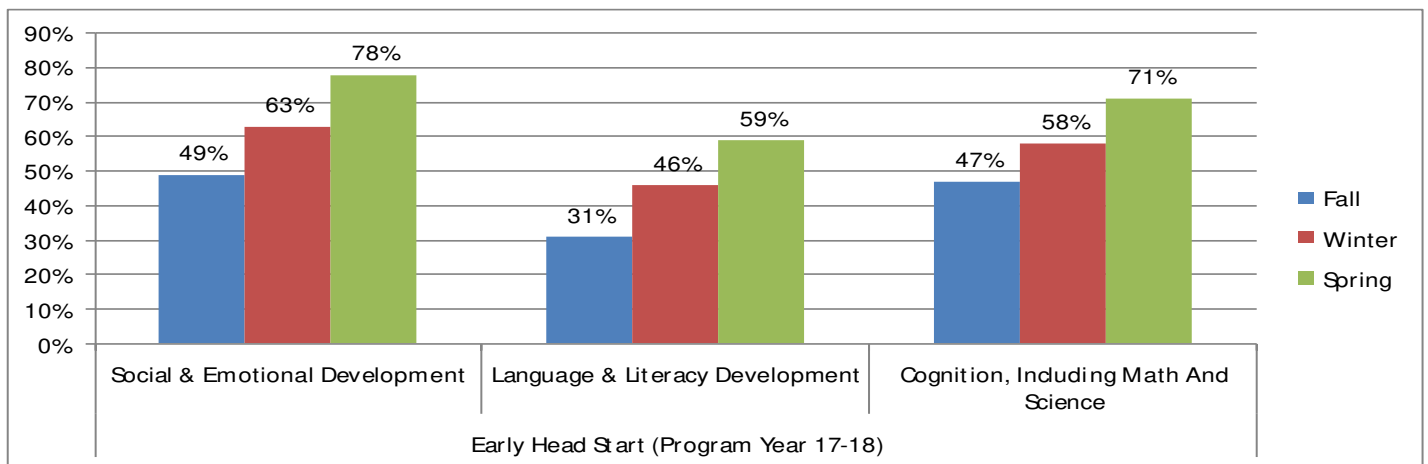
# 2017-18 School Readiness—Head Start and Early Head Start Programs



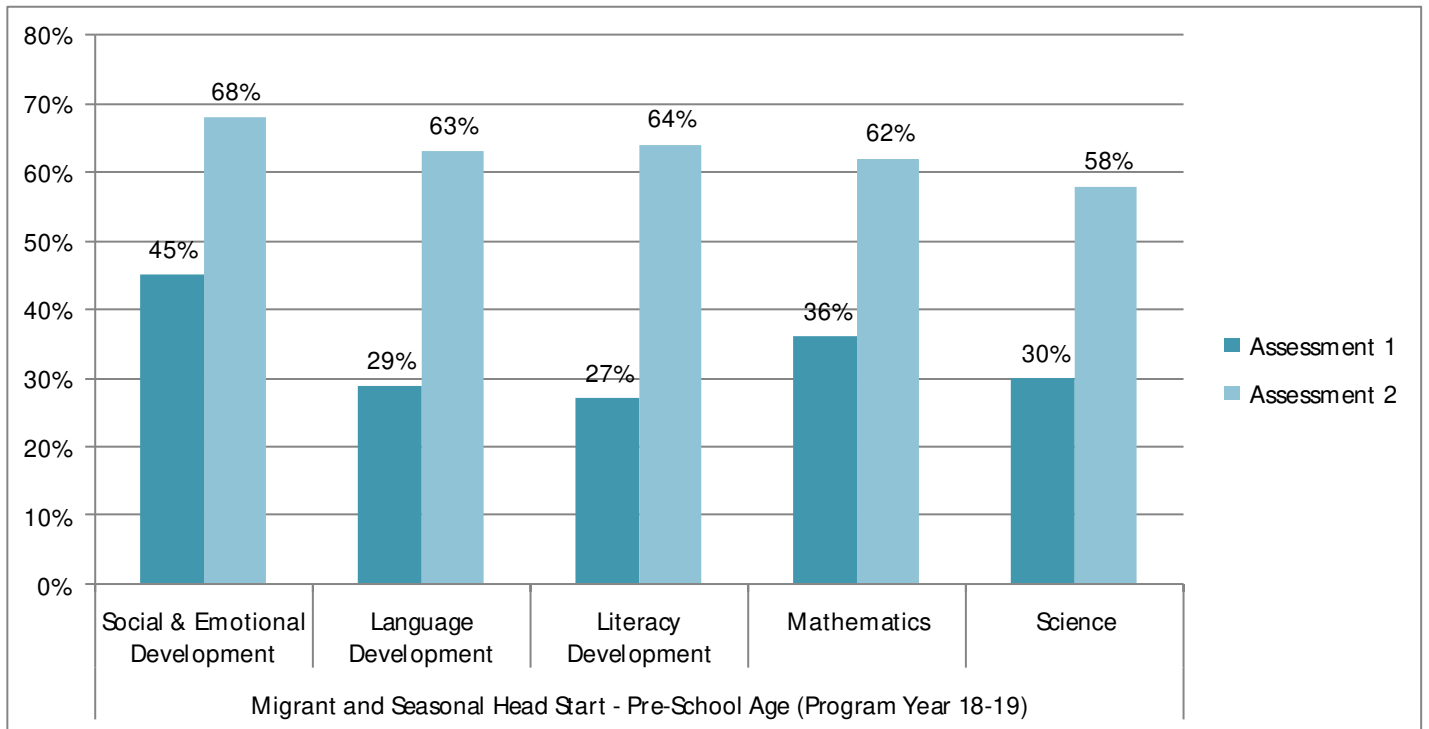
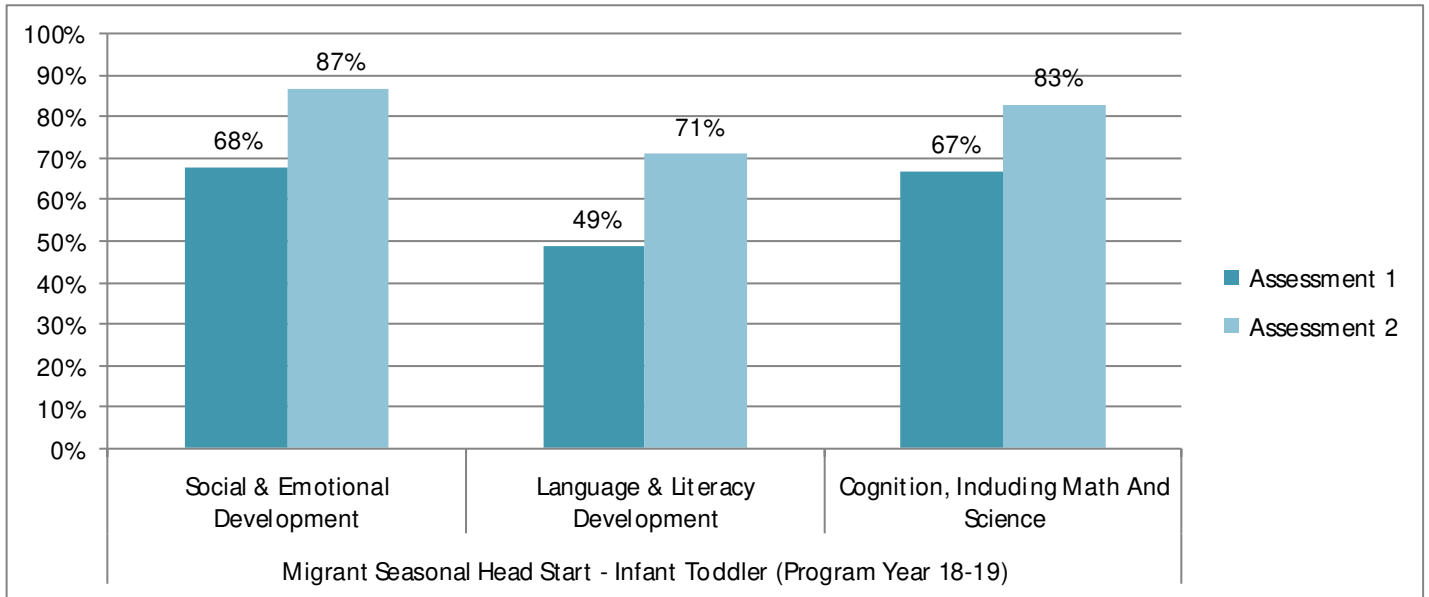
The following charts, represent the percentages of participants at Age Specific Development Level for each of the three Desired Results Development Profile (DRDP) assessments completed during the 2017-2018 program year.

E Center uses DRDP (2015) in combination with other data sources, such as Environmental Ratings and CLASS to identify areas of strengths by agency, program, region, center and classroom. The combination of data analysis also provides direction on how we support teachers, center directors in their efforts toward continuous improvement of early childhood educational services in Northern California. (Continue on Page 12)

## Domain Percentage of Children At or Above California Early Learning Foundation Expectations *Based on Age of Child at Time of Assessment*



# 2018 School Readiness — Migrant and Seasonal Head Start Programs

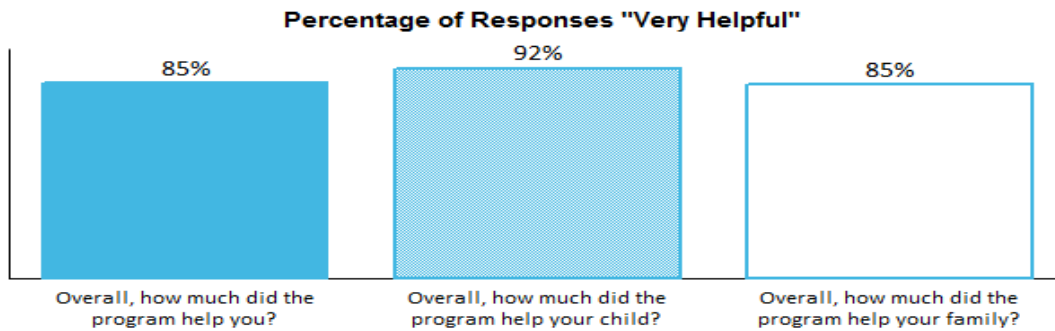


Continue from page 11: The DRDP (2015) results are used to plan curriculum and daily activities for individual children and groups of children. Additionally, E Center uses DRDP results to focus **intentional teacher trainings** and program expenditures. The results also measure E Center’s **School Readiness Goals. (Please note: the MSHS program had two assessments during the 2018 program term)**

# Family Engagement—Head Start and Early Head Start Programs



## Overview



In the Spring of the 2017-2018 school year, 455 parents and guardians of children enrolled in E Center Head Start Regional Early Head Start/Head Start completed a survey about how

they and their families benefited from the variety of services they received. Overwhelmingly, parents and guardians found E Center Head Start Regional Early Head Start/Head Start services very helpful. 92% reported that they found the program very helpful to their children, 85% reported that they found the program very helpful to themselves personally, and 85% reported that they found the program very helpful to their families. These results are a strong testament from the respondents about how much the E Center Head Start Regional Early Head Start/Head Start contributes to their families' well-being.

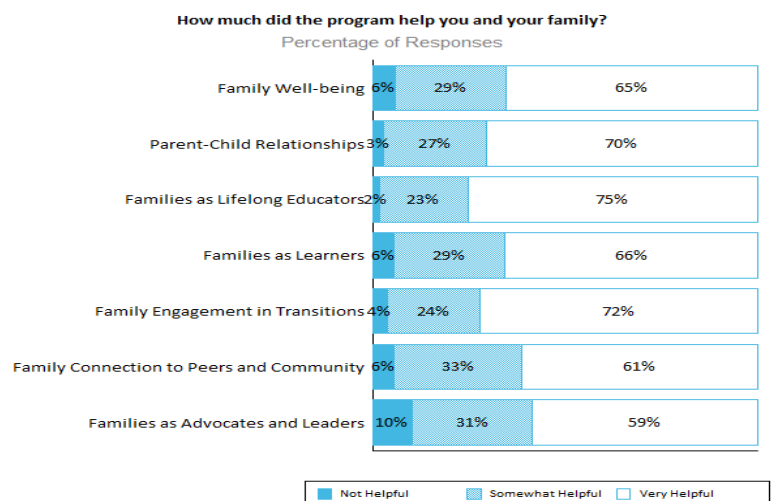
## Outcome Areas

Family outcomes were measured in seven different "outcome areas" defined by the federal Office of Head Start in the "The Head Start Parent, Family and Community Engagement Framework".

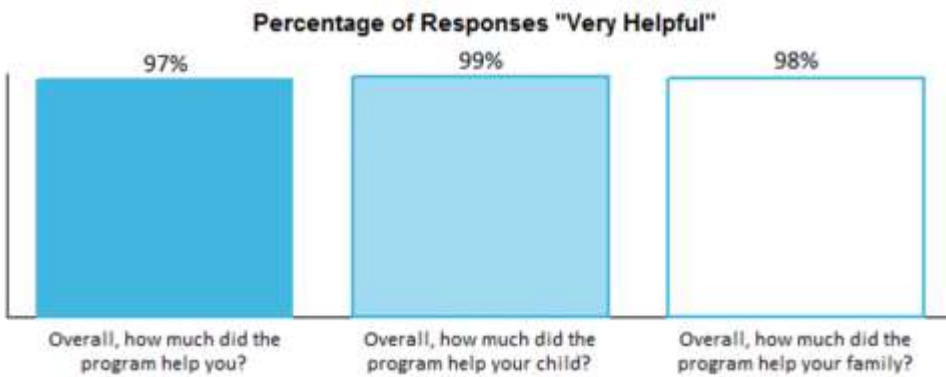
Of the seven areas, parents and guardians found E Center Head Start Regional Early Head Start/Head Start most helpful in "Families as Lifelong Educators" and "Family Engagement in Transitions". For "Families as Lifelong Educators", 75% of respondents found the program very helpful and 2% deemed the program not helpful. In the area of "Family Engagement in Transitions", 72% of respondents found the program very helpful and 4% found the program not helpful.



Parents Donating Their Time to Support Outdoor Environments



# Family Engagement — Migrant and Seasonal Head Start Programs

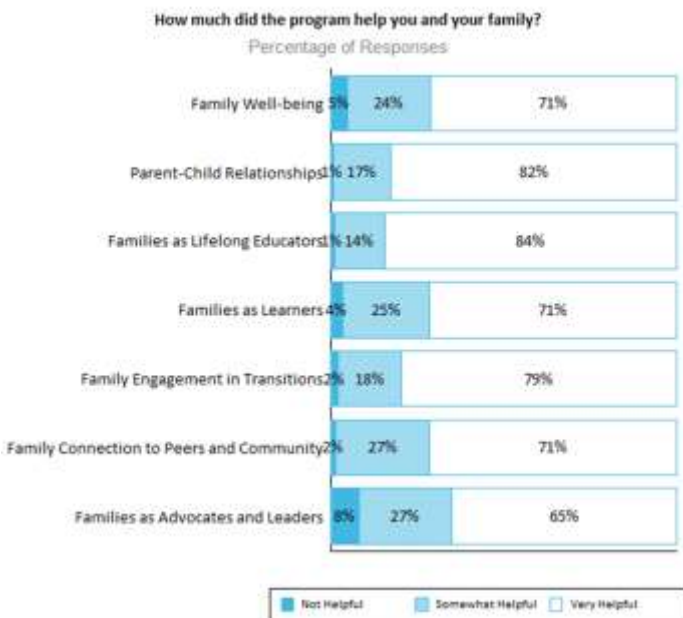


In the Fall of 2018, 295 parents and guardians of children enrolled in E Center Head Start MSHS completed a survey about how they and their families benefited from the variety of services they received. Overwhelmingly, parents and guardians

found E Center Head Start MSHS services very helpful. 99% reported that they found the program very helpful to their children, 97% reported that they found the program very helpful to themselves personally, and 98% reported that they found the program very helpful to their families. These results are a strong testament from the respondents about how much the E Center Head Start MSHS contributes to their families' well-being.

## Outcome Areas

Family outcomes were measured in seven different "outcome areas" defined by the federal Office of Head Start in the "The Head Start Parent, Family and Community Engagement Framework". Of the seven areas, parents and guardians found E Center Head Start MSHS most helpful in "Families as Lifelong Educators" and "Parent-Child Relationships". For "Families as Lifelong Educators", 84% of respondents found the program very helpful and 1% deemed the program not helpful. In the area of "Parent-Child Relationships", 82% of respondents found the program very helpful and 1% found the program not helpful.



Parents Donating Their Time to Support Classroom Environments



Creative Play at E Center's Live Oak Center

1506 Starr Drive  
Yuba City, CA 95993  
tel 530.634.1200  
fax 530.743.3002  
[www.ecenter.org](http://www.ecenter.org)